

**STAINLESS STEEL
strainer**

flanged

**PN 10 - 40
DN 15 - 400**

Applications

- Process engineering, general industry, building services industry, domestic engineering.
- Food, beverages and tobacco industry.
- For aggressive media.

Operating data

- Maximum allowable pressure 40 bar.
- Max. permissible temperature from -10°C to +400°C.
- Pressure-temperature rating see next side.

Materials

- Cast steel G X 5 CrNiMo 19-11-2 - 1.4408.

Design

- Straight-way pattern with inclined bonnet.
- Strainer insert made of stainless steel (standard mesh size).
- Cover gasket inside and outside confined.
- Materials free from non-ferrous metals.

The valves meet the safety requirements of the Pressure Equipment Directive 97/23/CE (PED) of annex I for fluids of the group 1 and 2.

The valves do not have a potential internal source of ignition and can be used in potentially explosive atmospheres, group II, category 2 (zones 1+21) and category 3 zones (2+22) according to ATEX 94/9/EC

Standard variants

- For application down to -60°C.
- Free from oil and grease.
- Bonnet gasket made of PTFE (up to 200 °C. max.).
- Heating jacket made of 1.4541/1.4301 or 1.4571/1.4404.
- Other flange designs.
- Fine mesh strainer insert.

Remarks

- BOACHEM® ZXAB: Globe valve with bellows and vertical bonnet according to type series book V-623080/5-10.
- BOACHEM® ZYAB: Globe valve with bellows and Y-pattern according to type series book V-623081/1-10.
- BOACHEM® ZXA/ZYA: Globe valve with gland packing and vertical bonnet (ZXA) or y-pattern (ZYA) according to type series books V-623082/1-10 (ZXA) and V-623083/1-10 (ZYA).
- BOACHEM® RXA: Non-return valve with vertical bonnet according to type series book V-623084/1-10.
- Operating instruction V827080-10

On all enquiries / orders please specify

- | | |
|-------------------------|-------------------------------|
| 1 Type | 6 Medium |
| 2 PN | 7 Operating Temperature |
| 3 DN | 8 Pipe connection |
| 4 Working pressure | 9 Variants |
| 5 Differential pressure | 10 Type series booklet number |

Note: Applications and Working Conditions:

applicability, as well as working and using conditions depend on materials
For further information, please do not hesitate to contact our Technical Department

Pressure-Temperature ratings²

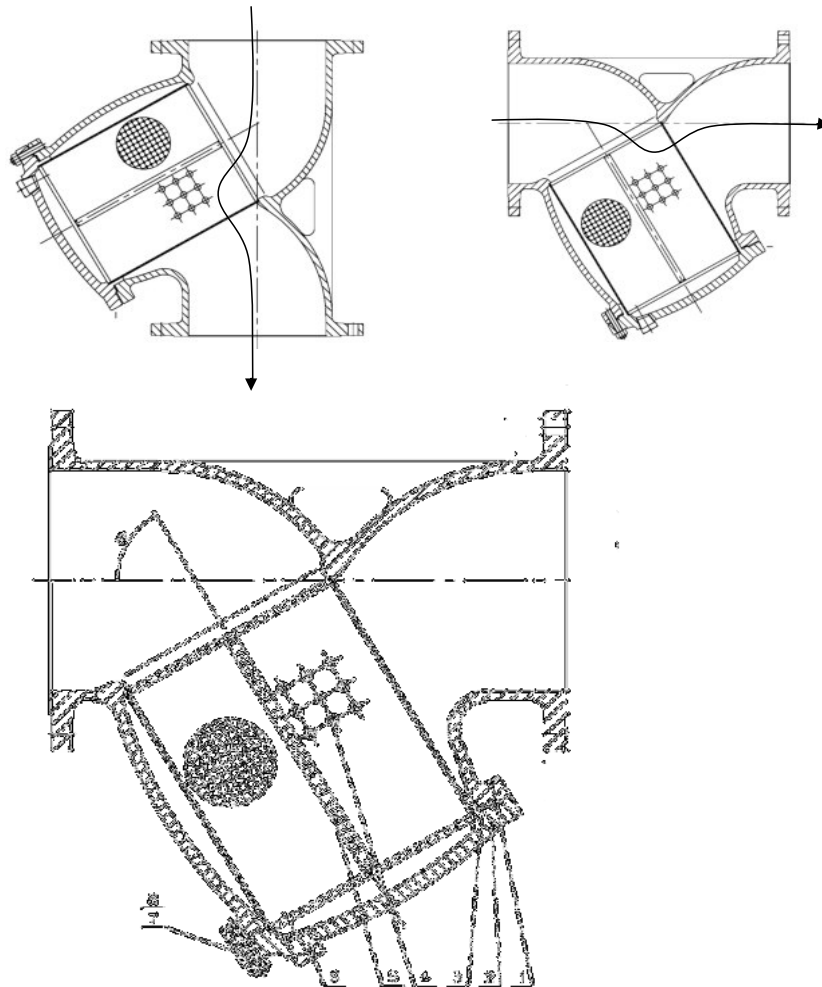
Nom. pressure PN	Material	Working pressure at temperature in °C in bar ¹							
		20	100	150	200	250	300	350	400
10	1.4408	10	10	9	8,4	7,9	7,4	7,1	6,8
16		16	16	14,5	13,4	12,7	11,8	11,4	10,9
25		25	25	22,7	21	19,8	18,5	17,8	17,1
40		40	40	36,3	33,7	31,8	29,7	28,5	27,4

1) The Valves can be used down to -10°C

2) According to EN 1092-1

Installation

In horizontal and vertical pipes we recommend that the strainer be installed with the insert down. Note the arrow indicating the direction of flow.

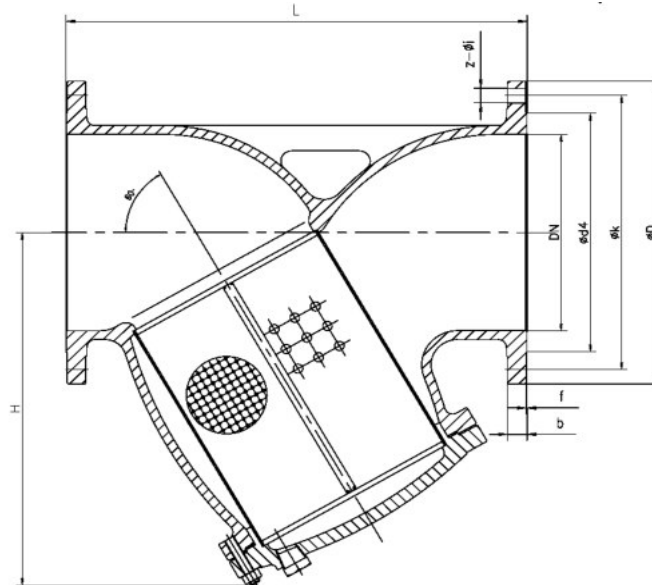


Materials

Part no.	Name of Parts	Material	Nr. Mat. Acc.to EN/DIN
1	Body	G X 5 CrNiMo 19-11-2	1.4408
2	Cap	G X 5 CrNiMo 19-11-2	1.4408
3	Gasket	304SS + Graphite	
4	Filter	X5 CrNiMo 18-10	1.4401
5	Framework	X5 CrNiMo 18-10	1.4401
6	Plug	X5 CrNiMo 18-10	1.4401
7	Bolt	A4-70	
8	Nut	A4-70	

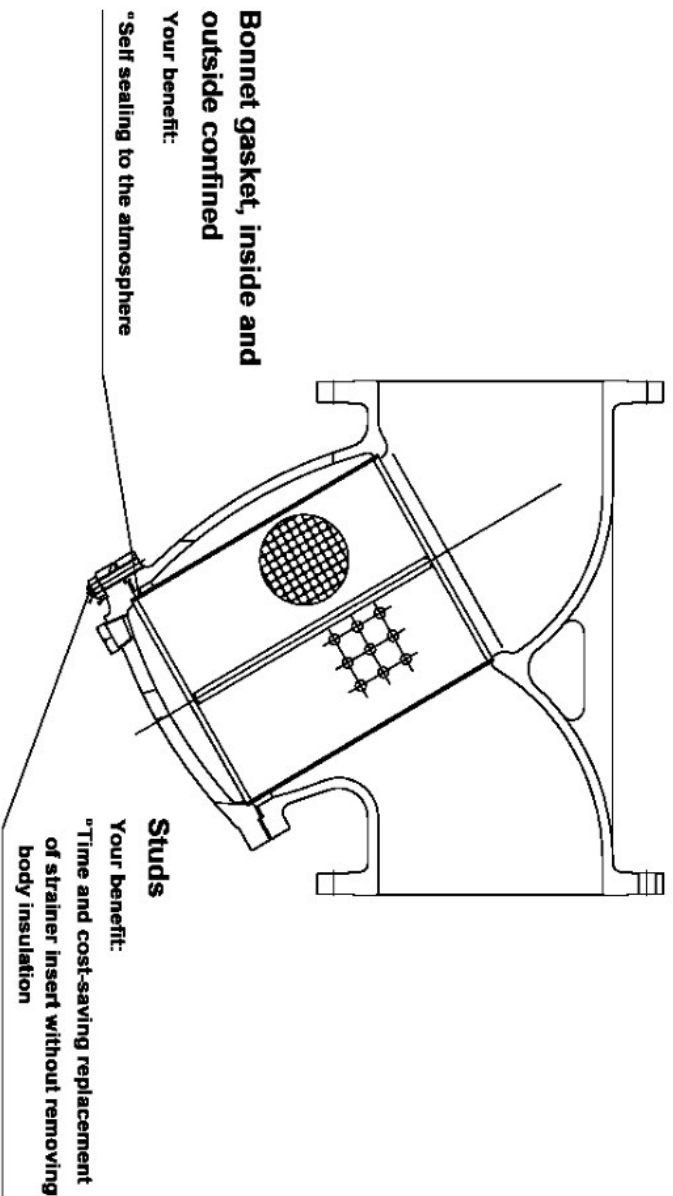
Dimensions

- Face-to face - EN 558-1/1 (previously: DIN 3202/F1) ISO 5752/1 Other flange designs (acc.to EN 1092-1): e.g. grooved both ends type D, tongue type C, recessed (female face) type F, spigot (male face) type E.
- Flanges - connecting dimensions to EN 1092-1 (previously: DIN 2501), ISO 7005, raised face type B1 Other flanges on request.



Nom. Pressure PN	Nom. Bore DN	Face-to-face dimensions L	Flange diam. D	Bolt circle k	Number of bolt holes z	Bolt hole diameter i	Raised face d4 x f	Flange Thickness b	Center-to-top height H	Weight kg
10/40	15	130	95	65	4	14	45x2	16	100	5
	20	150	105	75	4	14	58x2	18	110	6
	25	160	115	85	4	14	68x2	18	120	7,5
	32	180	140	100	4	18	78x2	18	125	9
	40	200	150	110	4	18	88x2	18	150	10,5
10/16	50	230	165	125	4	18	102x3	20	165	14
	65	290	185	145	8	18	122x3	18	185	20
	80	310	200	160	8	18	138x3	20	190	24
	100	350	235	190	8	18	162x3	20	200	29
	125	400	270	220	8	18	188x3	22	280	53
10	150	480	300	250	8	22	212x3	22	310	75
	200	600	340	295	8	22	268x3	24	390	125
	250	730	395	350	12	22	320x3	26	455	235
	300	850	445	400	12	22	370x4	26	665	400
	350	980	505	460	16	22	430x4	26	725	600
16	400	1100	565	515	16	26	482x4	26	783	900
	200	600	340	295	12	22	268x3	24	390	125
	250	730	405	355	12	26	320x3	26	455	239
	300	850	460	410	12	26	378x4	28	665	408
	350	980	520	470	16	26	438x4	30	725	611
25/40	400	1100	580	525	16	30	490x4	32	783	922
	65	290	185	145	8	18	122x3	22	185	24
	80	310	200	160	8	18	138x3	24	190	28
	100	350	235	190	8	22	162x3	24	200	43
	125	400	270	220	8	26	188x3	26	280	71
25	150	480	300	250	8	26	218x3	28	310	99
	200	600	360	310	12	26	278x3	30	390	140
	250	730	425	370	12	30	335x3	32	455	252
	300	850	485	430	16	30	395x4	34	665	420
	350	980	555	490	16	33	450x4	38	725	630
40	400	1100	620	550	16	36	505x4	40	783	945
	200	600	375	320	12	30	285x3	34	390	148
	250	730	450	385	12	33	345x3	38	455	266
	300	850	515	450	16	33	410x4	42	665	499
	350	980	580	510	16	36	465x4	46	725	676
40	400	1100	600	585	16	39	535x4	50	783	978

Product Features - to our Customer's Benefit



V-623085 This leaflet has not contractual validity and could be subjected to technical modification without prior notice



KSB Italia S.p.A.
Via Massimo D'Azeglio, 32 - 20049 Concorezzo (MI)
Tel. 039 6048.1 - Fax 039 6048.153/154 - <http://www.ksb.it>